

<https://vizifuze.com/>



SPECIFICATIONS ARE SUBJECT TO CHANGE WITHOUT NOTICE.

ALL RIGHTS RESERVED © VIZIFUZE TECHNOLOGY Co., Ltd. 2024

HD -BROCHURE-BA
20240605
PRINTED IN CHINA



NEW

Analog output switchable
Judgment output Switchable

HD series Laser Displacement Sensor

CE FDA
RoHS

Different materials and colors
Can handle different materials and
colors with ease

Various materials, color linearity $\pm 1\%$ High-speed
sampling frequency up to 2000Hz
Repeatability up to $1\mu\text{m}$





HD series Cost-effective laser displacement sensor

- Bus communication function supports collaborative measurement of 16 stations
- The 12-core cable supports multiple outputs such as 485, analog, and judgment at the same time
- Coaxial shielded cable for stable transmission of data
- Quick-Lock connector, one second unplugging

IP67 Protection

Can be used in dusty and humid environments.
Internal mounting holes have metal sleeves to withstand high mounting stresses.

High stability

NEW Upgraded to the second generation of SPA algorithm
SUPER-POINT-AI GORITHM.
Stable picking of points even on workpieces of different colors
and materials compared to the first generation.
Ensures reliable sensor output.

Responding to the Demand for Production Innovation with Three "New Senses"



Test reports are issued by domestic authoritative organizations
Built-in coefficient correction for different installations



Guidelines for IEC Class 2 laser safety measurements



Fast sampling at 2000 FPS
1-1024 output average adjustable



·Specification

HD Series Laser displacement sensor			
Model	HD-035	HD-065	HD-100
Reference distance	35mm	65mm	100mm
Measuring range	30 to 40mm	45 to 85mm	60 to 140mm
Light source	Visible light semiconductor laser (Wavelength 650nm, below 1mW, JIS2 level, IEC/EN Class2, FDA Class2)		
Spot type※1	Point	Line	Point
Spot size	≤75μm	65x1600μm	≤270μm
Optical receiving device	CMOS image sensor		
Supply voltage	Current type: 12-24VDC±10%, ripple 0.5%; Voltage type: 18-24VDC±10%, ripple 0.5%		
Current consumption	When the power supply voltage is 24V, the current consumption is below 100mA		
Input(Switchable)	Pulse width input According to the input time, there are zero setting, ZERO OFF, reset, teaching, laser control, and memory switching In case of using NPN output: 0 depends on the time it is connected to 0V; In case of using PNP output: it depends on the time it is connected to the external power supply +pole		
	External input In case of using NPN output: action when connected to 0V; In case of using PNP output: Actions when external power supply + pole is connected		
Judgment output(Switchable)	<NPN type> 2 channels, maximum current: 50mA, applied voltage 3-24VDC; Leakage current: below 0.1mA		
	<PNP type> 2 channels, maximum current: 50mA; Leakage current: below 0.1mA		
Analog output(Switchable)	4-20mA (Load impedance: below 300Ω), 0-10V (Output Impedance: 100Ω)		
Communication interface	RS485 modbus RTU, RS422		
Output operation	Open when the output is ON		
Short circuit protection	Incorporated (automatic restoration)		
Linearity※2	±0.1%F.S.	±0.1%F.S.	±0.1%F.S.
Repeatability※3	1μm	4μm	8μm
Sampling frequency	2000Hz, 1000Hz, 500Hz, 200Hz adjustable		
Action indicator light	Power Green LED; Lasers, OUT1, OUT2, warning yellow LED		
Temperature characteristics	0.05%F.S./°C		
Use ambient illuminance	Illumination of lighted surface Incandescent lamp 10000 Lux		
Ambient temperature range	Working hours: 0-50°C, when saving: -15到+70°C		
Ambient humidity range	When working, when saving: 35 to 85%RH (No condensation)		
Voltage withstandability	AC 1000V 50/60Hz 1min		
Vibration (durable)	10-150Hz Dual amplitude 0.7mm 3-axis each direction 80min		
Impact (durable)	300m/s ² 3 times in each of 6 directions (up and down, left and right, front and back)		
Protection level	IEC IP67		
Connection method	PVC cable 14PIN shielded cable, standard length 50mm, extension cables are available separately.		
Material	Body housing PBT, optical mount PPS, cable PVC		
Notes	※1 This value is the value at the detection center distance and is defined based on the center light intensity of 1/e ² (13.5%). Detection errors may be sent when there is light leakage outside the defined area and when the reflection ratio around the target object is higher than that of the target object. It may not be possible to accurately measure workpieces smaller than the spot size. ※3 Indicates the error relative to the ideal straight line of the displacement output when measuring our standardized object. Linearity and measurement values vary depending on the object. F.S. indicates the entire measuring range. (HD-035: 10mm) ※4 The maximum range of fluctuation of the measured value when detecting the measured object in a completely stationary state. ※5 It is scheduled to be classified as diffuse-reflective type Class 2 according to IEC60825-1 in accordance with Laser Notice No. 50 of the FDA standard, and has been declared CDRH.		

For instance	Discription
tG51HZ-□□□-□□□□	1 Range 2 Analog Voltage Output Type 3 Serial Communication Type 4 Spot Shape 5 Determine the type of output
1 2 3 4 5	035:35±5mm V:Voltage E:RS385 P:Spot N:NPN 065:65±2mm I:Intensity of current L:Short Line Spot P:PNP 100:100±40mm

Note: All models can switch between NPN/PNP output and analog voltage/analog current output through UI or serial port commands. The model shown on the product label and UI indicates the default configuration of the product at the factory.

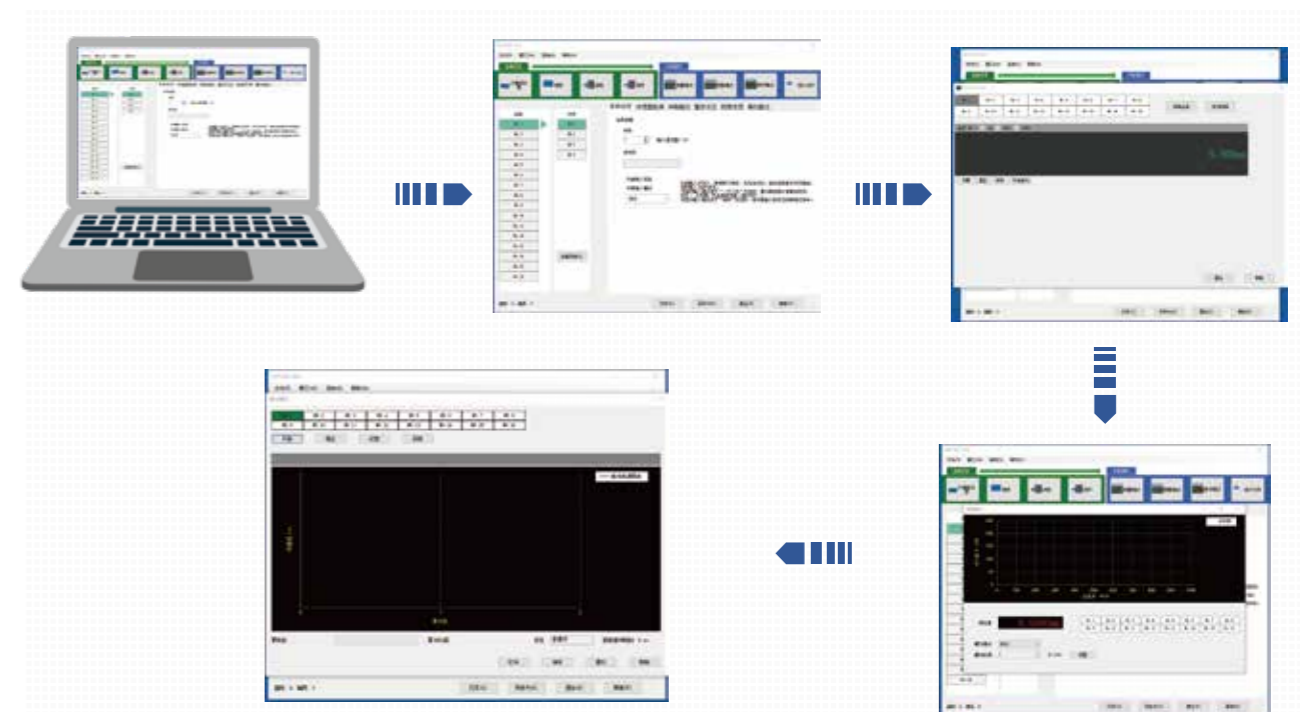
·Options (sold separately)

Type	Product Pic.	Model	Description
Extension cables		HD-YCX2Z	Length:2m,N.W.kg:approx.124g
		HD-YCX5	Length:5m,N.W.kg:approx.310g
		HD-YCX10	Length:10m,N.W.kg:approx.604g
Mounting Bracket		HD-AZZJ	N.W.kg:80g Stainless steel mounting bracket

* For other lengths, please contact our sales.

·Software Operating Environment Requirements & Operation Chart

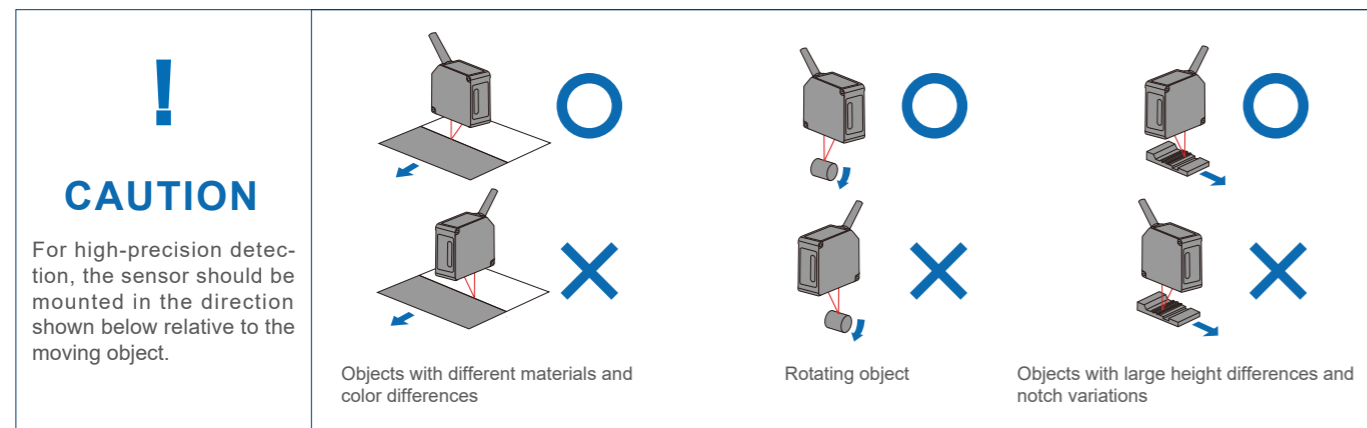
PC environment	PC-AT Compatible					
	OS type	32/64	Edition	Service Pack	.Net	VisualStudio Runtime
OS	Windows®XP	32bit	Professional	SP2 and above	Unnecessary	VS2008 necessary
	Windows®Vista		Enterprise	No special requirements		
	Windows®7	32bit/64bit				
CPU	Intel Pentium 4 2GHz or higher or a compatible CPU of the same class or higher					
Monitor	xGA(1024x768 256color)above					
Memory card	1GB above					
Hard disk	Available space 100Mb or more					
USB interface	Based on USB 2.0 full Speed(compatible with USB 1.1)					



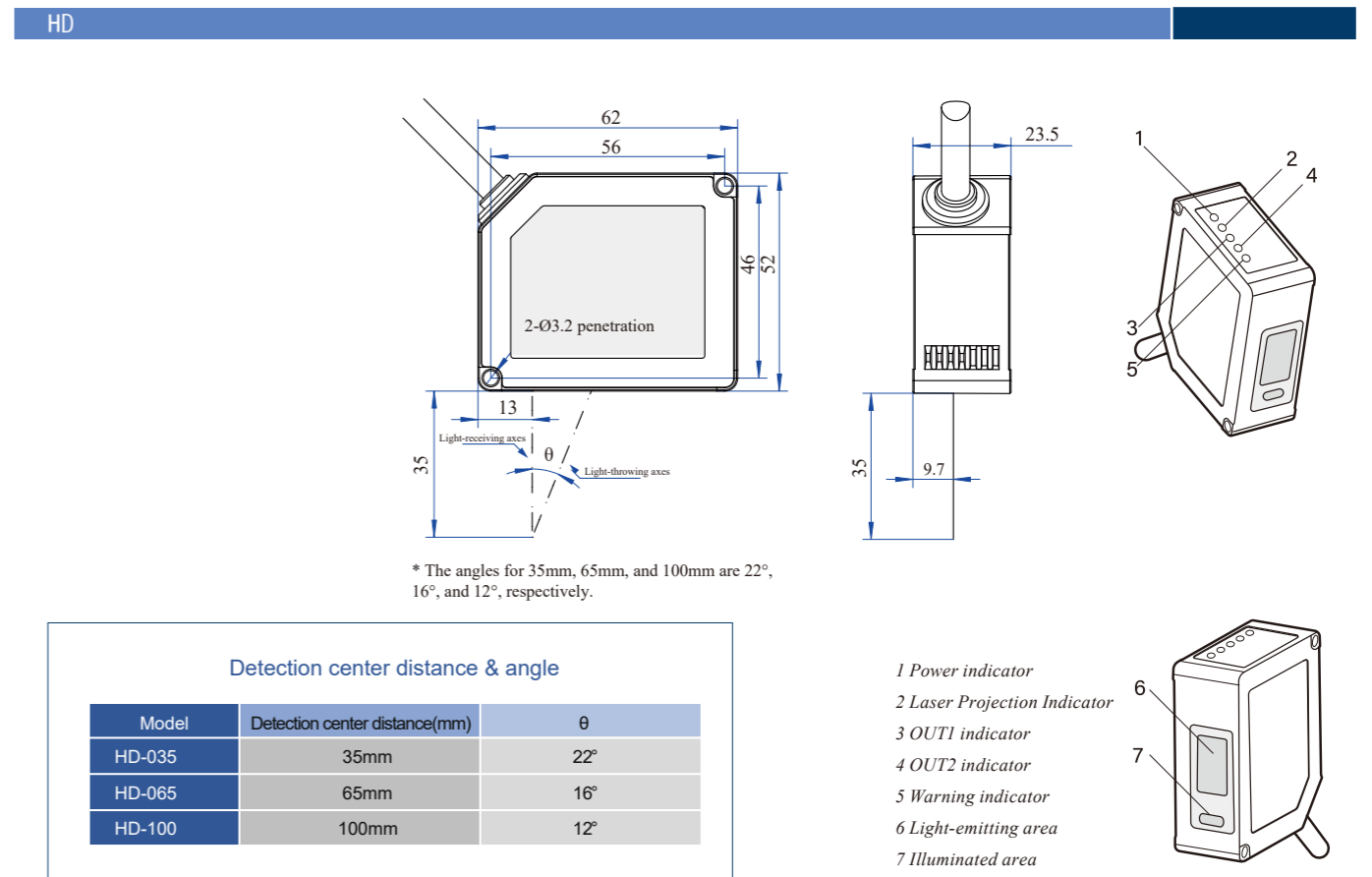
·Measurement range chart & detector head mounting direction



·Detection head mounting direction



·Product Dimension



·Measure with confidence even in harsh

- Protection structure IP67
- Robot cables
- Repeatability 1μm

- Sensor cables and extension cables come standard with robot cables that
- You can use them with peace of mind even in movable areas.
- Moreover, three-dimensional UV bonding has been adopted for the optical parts.
- This makes it possible to suppress stress and realize good temperature characteristics.

